

SEPTEMBER 2022

We hope our emails are helpful. Please contact your district office for email address changes in **TWCHub**.
Ministry account setups for contributions in our Online Payment System (OPS) are due December 1.

OUR TOPIC TODAY: **WIF SEMI-ANNUAL UPDATE**

The Wesleyan Investment Foundation update is in the “INVESTMENTS” section of our website and updated in July and January. Click the “WIF Semi-Annual Update” button to open a new tab in your browser to bring it up:



Overview of WIF

Wesleyan Investment Foundation exists to assist churches and other church -related organizations of The Wesleyan Church and churches of various other denominations by providing financing at favorable rates for the purchase, construction, renovation and expansion of churches, parsonages and other buildings and property.

Rate of Return

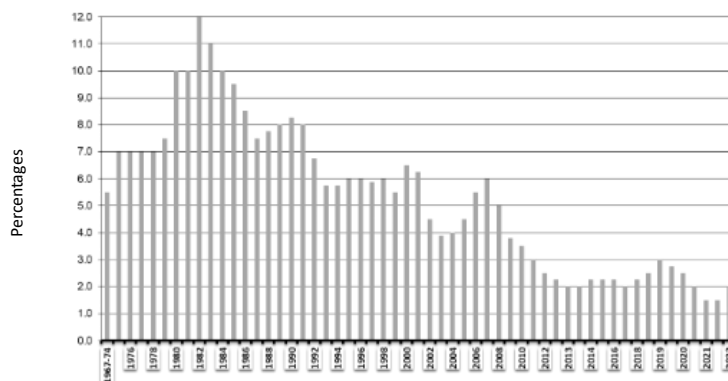
WIF will pay a stated rate of 2.0% beginning July 1, 2022. The rate may be reset January 1, 2023 and semi-annually thereafter.

Stable Advantages:

Wesleyan Investment Foundation has been in existence since 1946 with the purpose remaining the same, “to provide loan funds to churches.” The plan offers three characteristics:

- **Stability of principal** — the value is not based on the stock and bond market and thus does not fluctuate according to those market forces.
- **A declared interest rate** — participants know in advance what the interest rate will be.
- **No charges** — participant may transfer assets in or out of the Wesleyan Investment Foundation Option without fees, penalty or market value adjustment from Wesleyan Investment Foundation.

WIF Interest Rate History



Serving HIM for your benefit,

DEBRA LEVITE

DIRECTOR OF OPERATIONS

WESLEYAN PENSION FUND INC

P: 317.774.3954 **T:** 800.595.4131 **F:** 317.774.3955

ADDRESS: 13300 Olio Rd, Ste 340, Fishers, Indiana 46037

wesleyanpensionfund.com — wpf@wesleyan.org